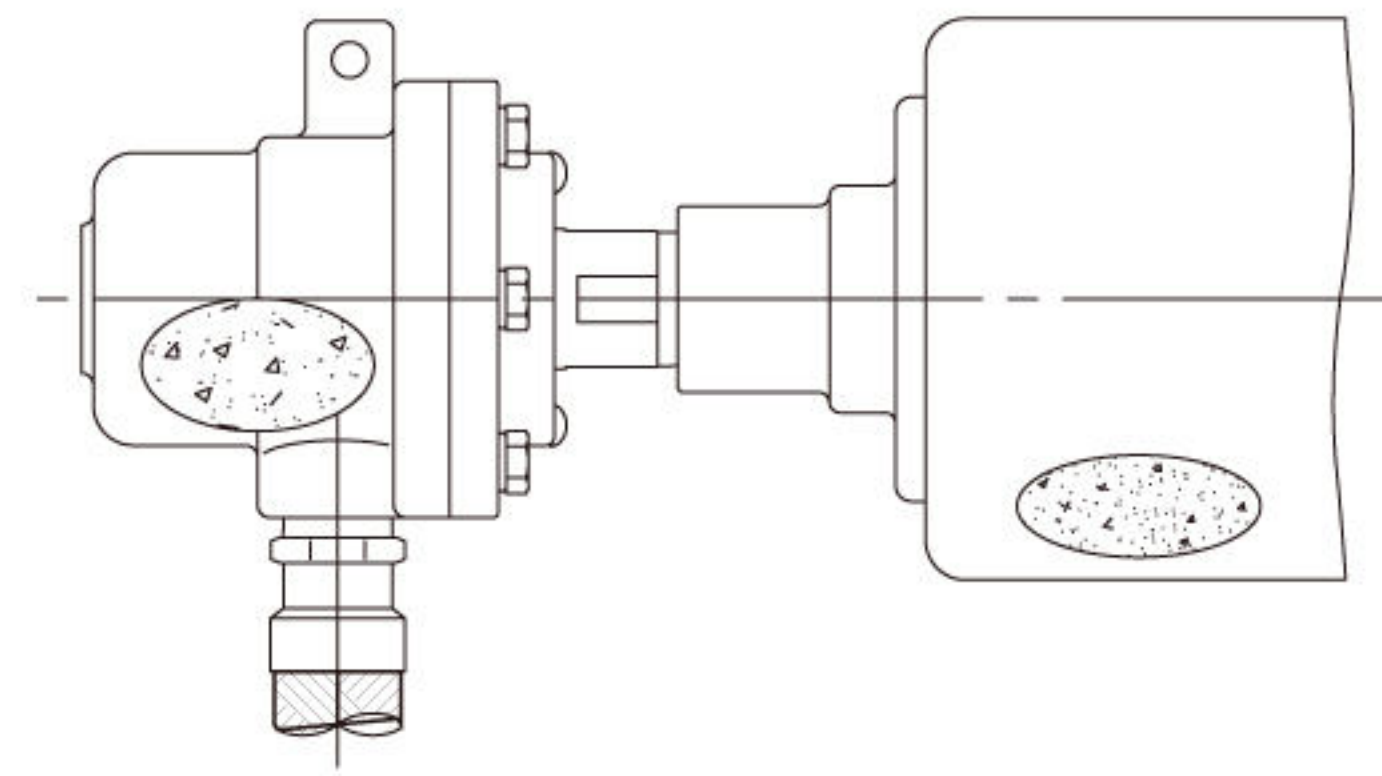


FOLLOW-UP OF SAND-IMPURITIES

雜質、鐵沙清理後續

It's so trouble finding pellets and impurities in tube or roller.

管路滾輪內有雜質、鐵沙是一件很麻煩的事。



There're three main factors indicating the wrongly- installment. According to the frequency happening to new machines, pellet and impurity issue matters the most, fixed structure ranked the second, an then the installment of flexible tubes.

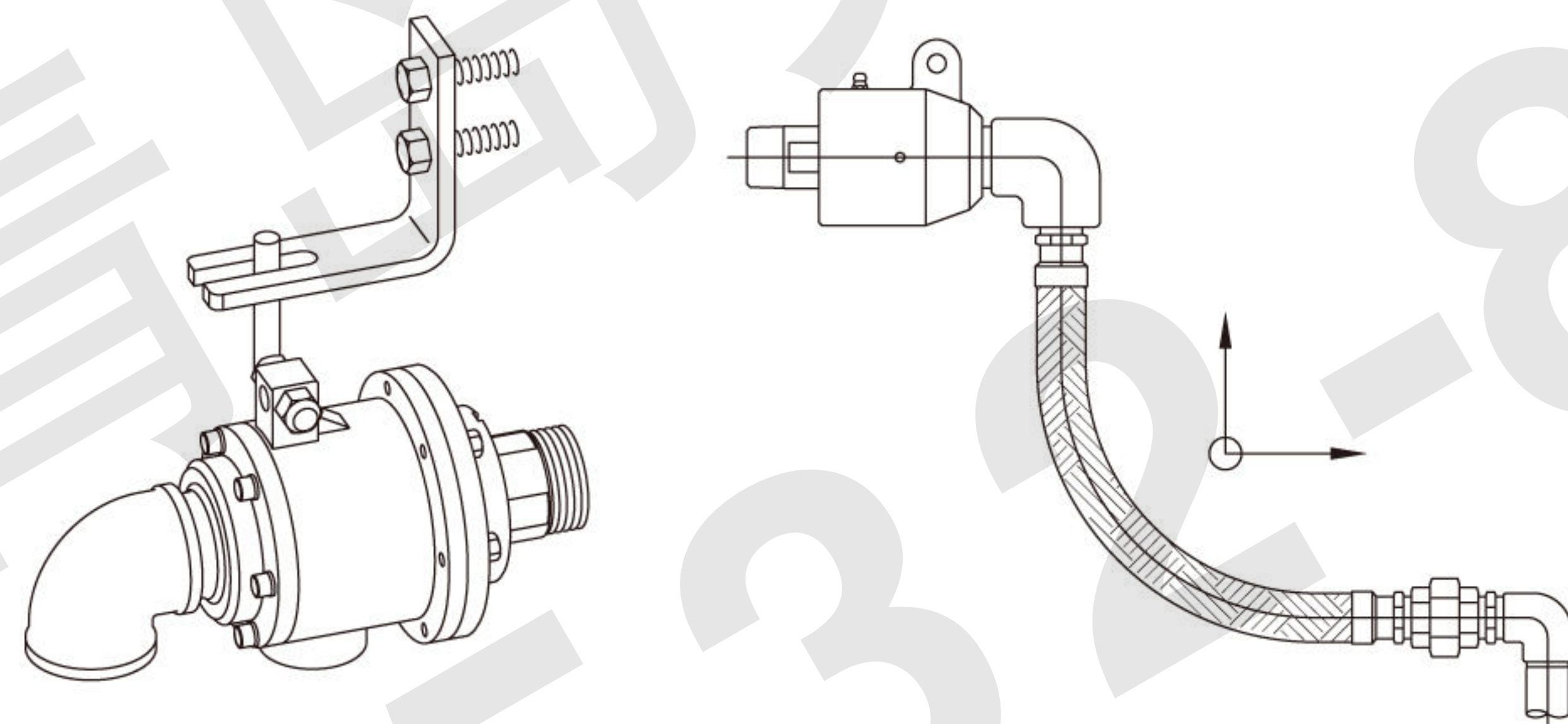
This case just demonstrates the situation of cleaning the impurities after taking the joint apart and then assembling them back.

1. Carbon parts have been damaged and the level of leaking just depends on how serious the damage is. For most occasions, by well-fixing it we have to return the joints back to the original manufacturer.
2. What if the leaking problem hasn't been improved after installing the fixed / new joints?
 - a. There're still pellets and impurities in the tube or rollers, all process are required to be done again.
 - b. It's not acceptable being neglected about the other 2 factors, fixed structure and the installment of flexible hoses.

假如一個完好的旋轉接頭，經安裝在機台上洩漏了，通常是有不符合裝配三要點而造成的，但依新機器所發生的頻率，雜質、鐵沙為害最多，固定支撐及軟管裝配次之。

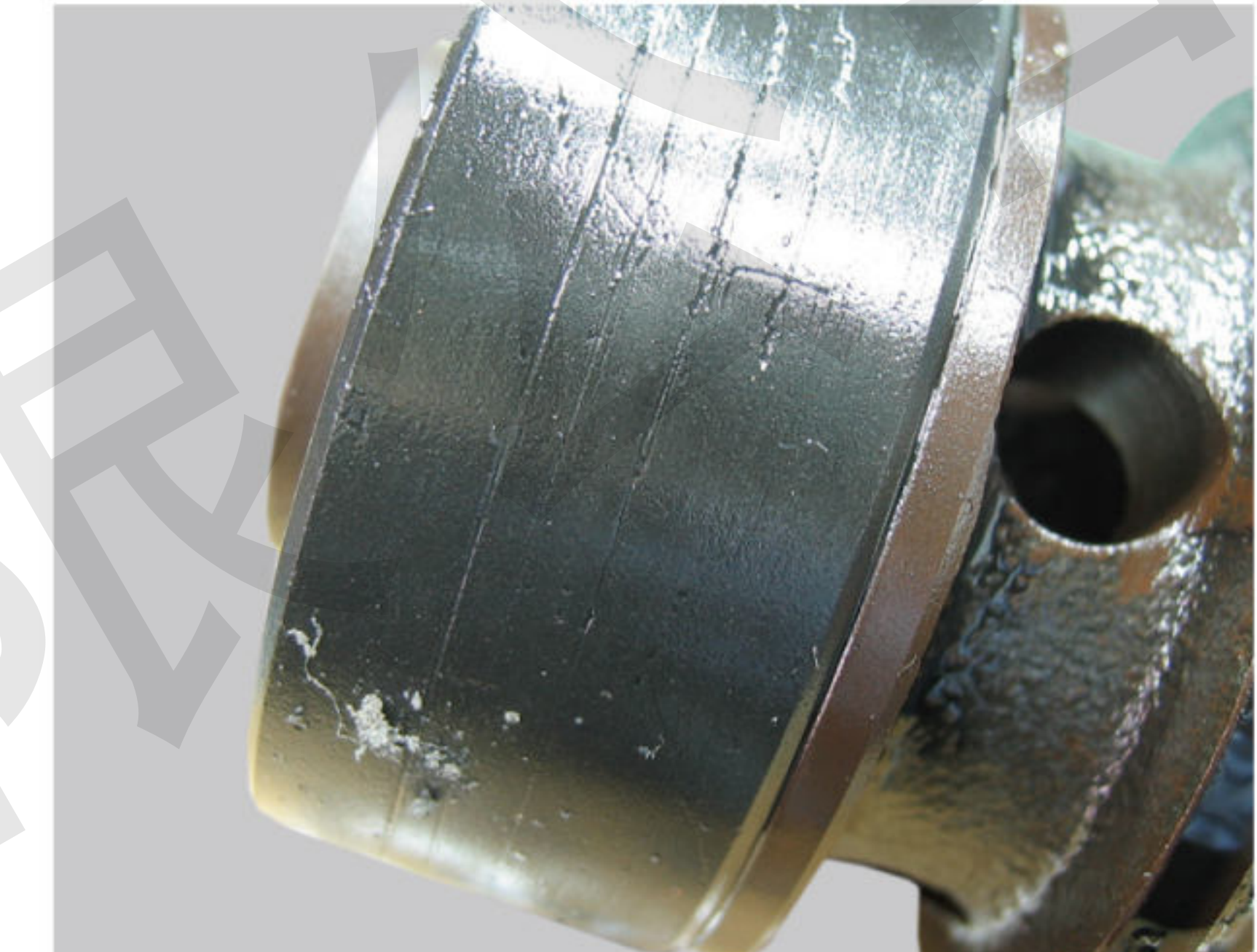
如旋轉接頭打開有雜質、鐵沙，雖經清洗後裝回仍有需討論的情況如下：

- 一、炭精等零件已有大小不同程度的受傷，輕度損傷的小漏，中度損傷的中漏，重度損傷的大漏，請不要太意外，如要修理此受傷的接頭，必須返廠整修。
- 二、如再將一整修完好品或一只新購品裝上仍有洩漏，有二情況如下：
 - A. 管路滾輪內仍有雜質、鐵沙存在，必須再重新清洗整修。
 - B. 固定支撐及軟管裝配二要點，也要做檢查是否符合，不能疏忽。



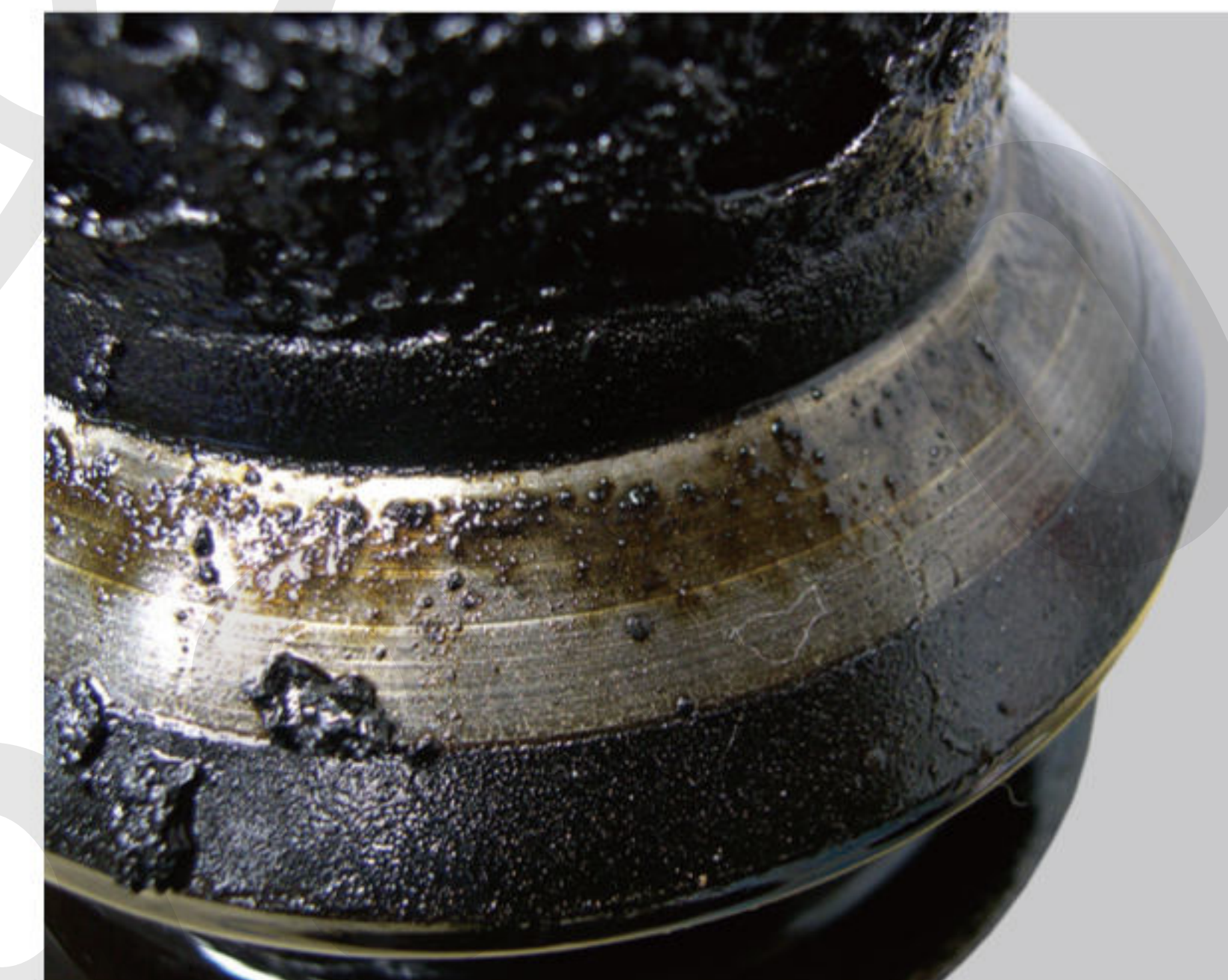
LIGHT DAMAGE

輕度磨損



MODERATE DAMAGE

中度磨損



SEVERE DAMAGE

嚴重磨損

