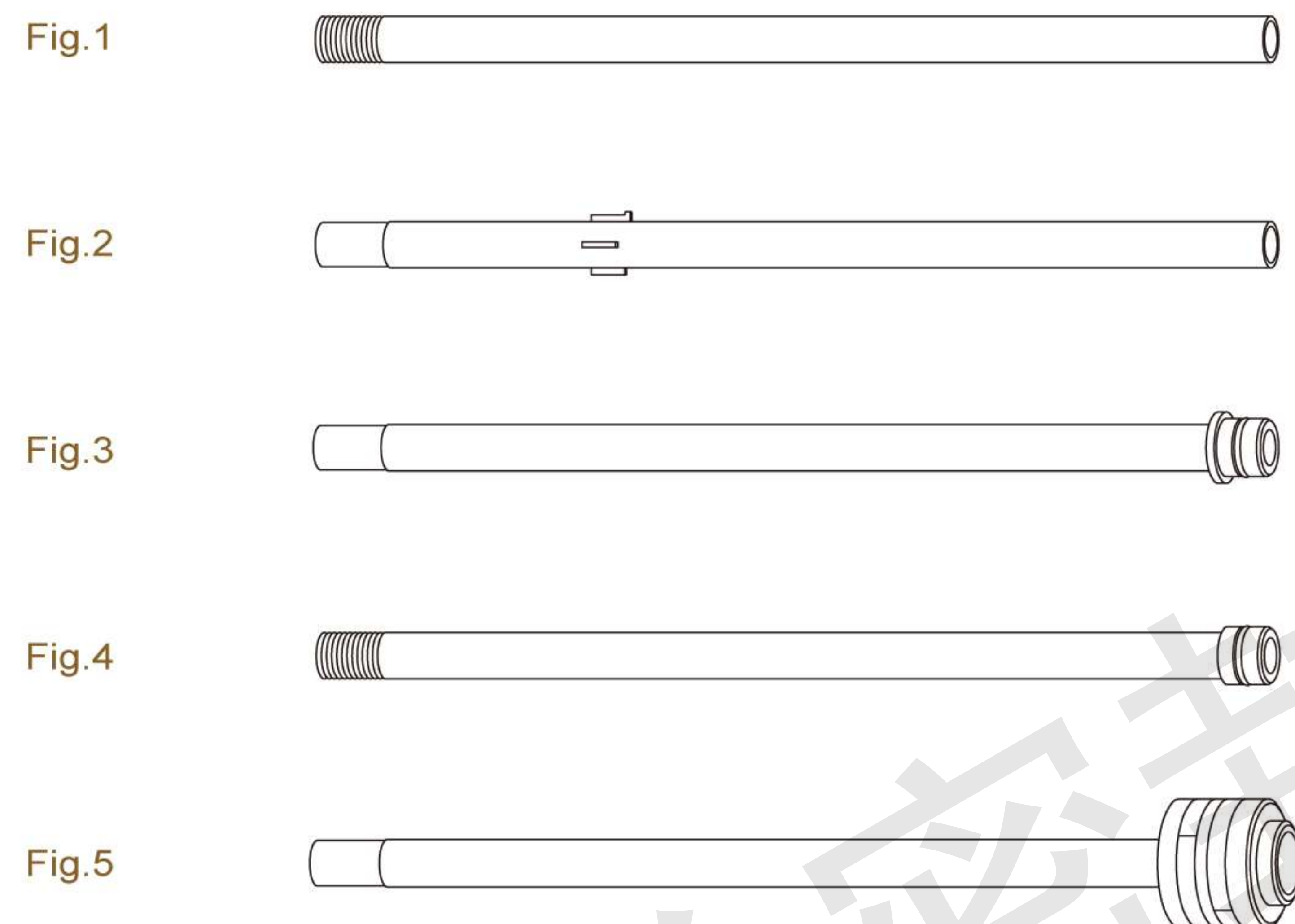


## ROTATING INTERNAL PIPE

### 旋轉式內管

These internal pipes can be used on both jacket and drill rolls depending on the structure of the roll or rotary joint.

這些樣式之內管使用於夾層輪、鉗孔輪，可隨滾輪之構造及旋轉接頭之型式做適當的搭配。

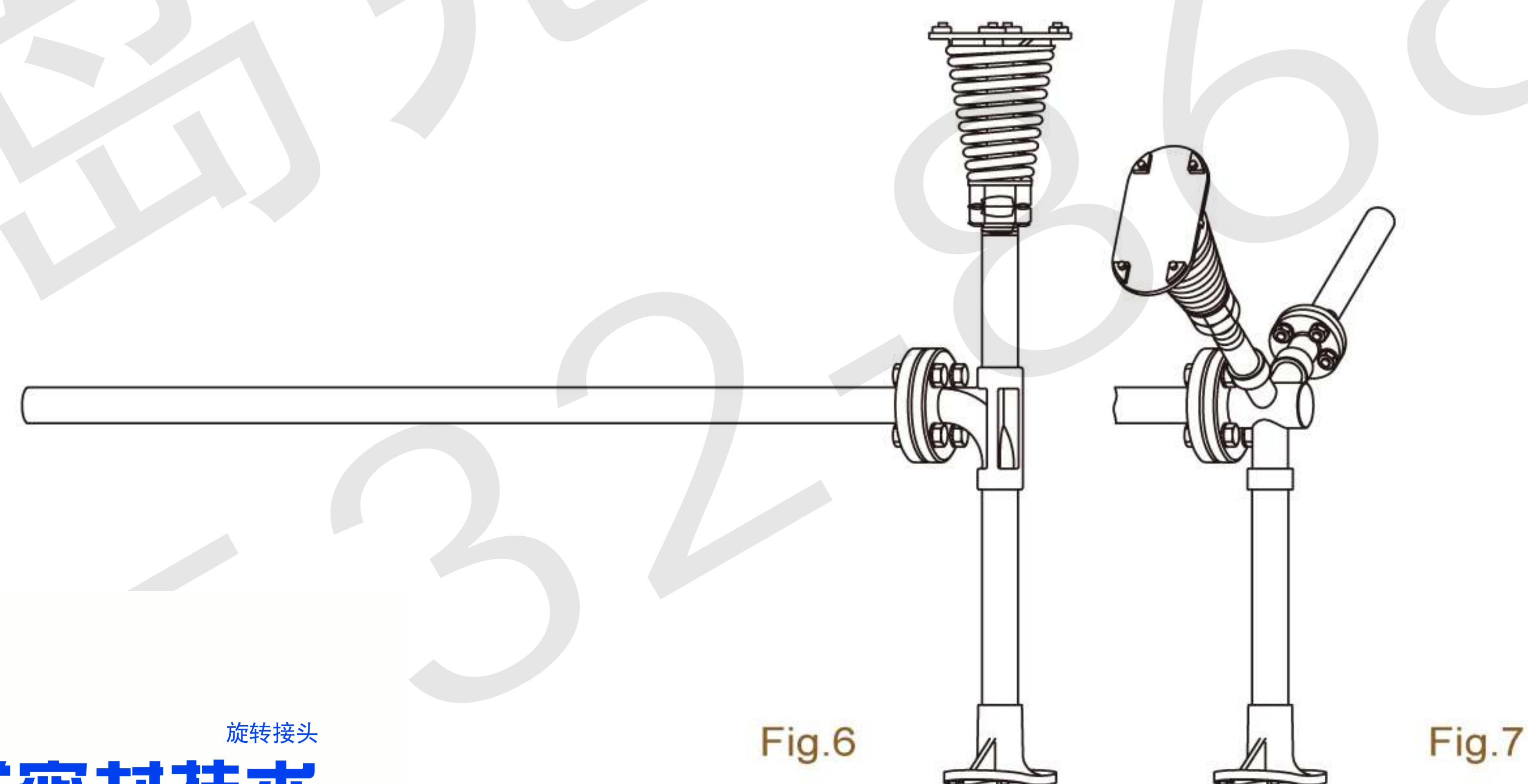


## ROTATING SYPHON

### 旋轉式虹吸管

These rotary syphons are used on high speed dryers for paper mills. They can be custom made.

旋轉式虹吸管使用於造紙廠之快速烘缸，可隨客戶的需求依烘缸之尺寸特別設計製作。



## FIXED INTERNAL PIPE

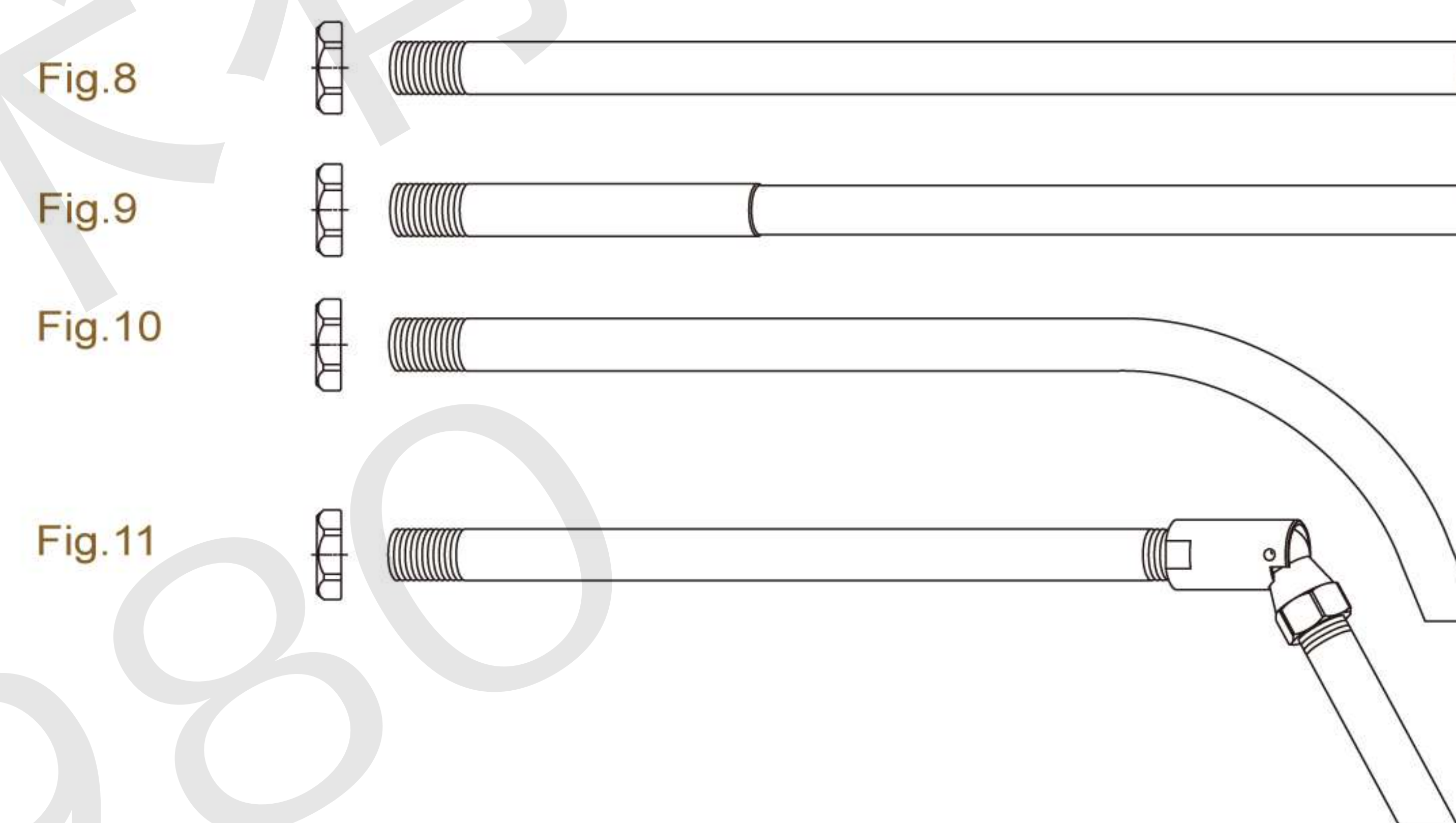
### 固定式內管

These straight internal pipes are used mainly for small rolls. The flow areas of both are the same. If the pipe is too heavy, the pipe in Fig.9 can be used as it is thinner and therefore lighter.

直式內管一端固定於旋轉接頭，使用於小口徑滾輪較多。圖 Fig.8 為直接車牙方式，如有過重顧慮，可採用圖 Fig.9 方式，使用薄管連接可減輕管的重量，且可保持相同的流量。

The bent internal pipe in Fig.10 can be used to drain condensate from steam dryers. If mounting is difficult, use the syphon elbow shown in Fig.11.

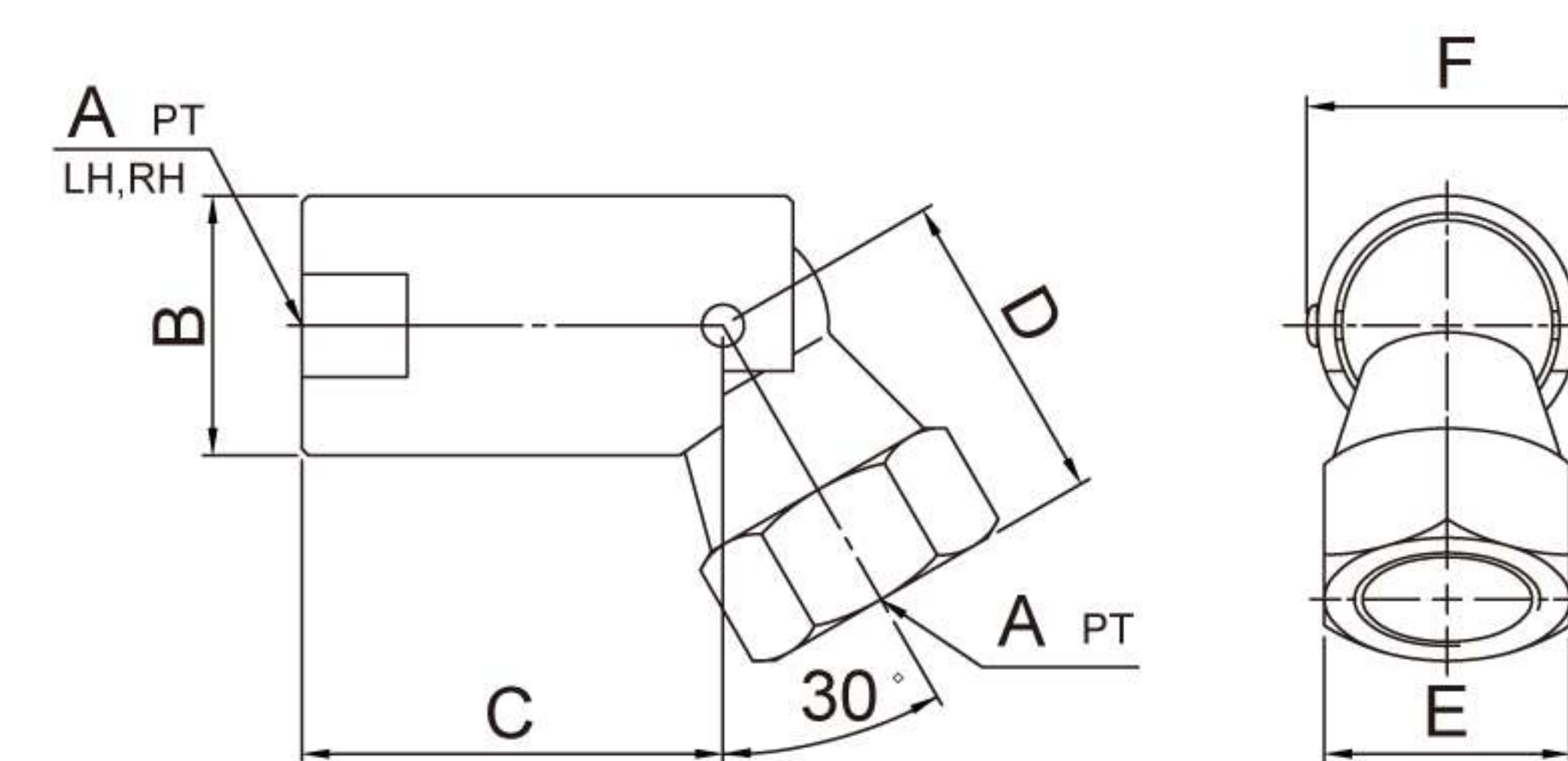
圖 Fig.10 彎管式內管使用於蒸氣烘缸，便於將冷凝水排出用。如裝配困難時，可參考如圖 Fig.11 方式，使用一只可彎曲的吸水彎頭。



## SYPHON ELBOW

### 吸水彎頭

Fig.12



Nominal Size	A	B	C	D	E	F
3/8"	3/8"	26	47	35	25	29.5
1/2"	1/2"	30.5	52	40	32	34
3/4"	3/4"	36.5	60	45	35	40
1"	1"	46	70	55	41	49.5
1.1/4"	1.1/4"	56.5	75	65	51	60